

ORIANA EMMA

PORTFOLIO



EACH IMAGE IS A WINDOW INVITING US TO LOOK BEYOND, EXPLORING THE DELICATE SPACE BETWEEN THE WORLD WE SEE AND WHAT WE FEEL. IN EVERY PROJECT, I ENJOY UNCOVERING A LITTLE MORE, FOLLOWING THE CURIOSITY THAT LEADS ME TO SHAPE HIDDEN EMOTIONS AND THOUGHTS.

Art must be life—it must belong to everybody.

Marina Abramović

CREATING IN BLUE [WITH REVERBERATING, ELECTRIFYING MAGENTA]	4
TO BUILD, TO CREATE. REASONS ARE NOT WINDOWS [THEY ARE WALLS, OBSTACLES]	8
ANGER, MOURNING. IN BLUE [HUMAN HINDRANCES]	12
SENSE IN BLUE [INVITATION]	21
THAT OF REBELLING, FOR A STRONG REASON. EMERGENCE PROJECT	23
PETROLEUM. THE COMPROMISED DIMENSION [OF THE RITE, OF THE SYMBOL, OF THE SACRED]	25
SENSE IN BLUE [INTIMACY]	33
SENSE IN BLUE [COURAGE]	38
STRANGE FACES [EXPLODE, DRIP]	43
LANDSCAPES OF THE SOUL [EMERGE]	48
IN THE LIGHT BLUE THE NUANCES, OR THOUGHT FOR MIRTH [ASPIRE TO TIME]	53
IN THE LIGHT BLUE THE NUANCES, OR THOUGHT FOR MIRTH [TO REALIZE TIME]	58
I CREATED CREATIVE WORK	64
I CREATED POWER	66
I CREATED RED HAIR	68
I CREATED SOMETHING THAT RESEMBLES MUD, FROST, AND SILENCE	70
I CREATED ADORABLE	72
LIGHT THAT EXECUTES. WITH WARMTH AND ART	75
ABOUT ME	79
FORMATIVE EXPERIENCES	80

CREATING IN BLUE [WITH REVERBERATING. ELECTRIFYING MAGENTA]

At this moment, blue quietly asserts itself. The electrifying magenta intertwines action and vibration, an essence that evokes depth and intimacy. This color scratches and caresses, creating a rhythmic silence that invites closeness: a shared heartbeat.

2024 | Digital Art | 7650x5100 px | Limited Edition



CREATING IN BLUE [WITH REVERBERATING. ELECTRIFYING MAGENTA]



CREATING IN BLUE [WITH REVERBERATING. ELECTRIFYING MAGENTA]



CREATING IN BLUE [WITH REVERBERATING. ELECTRIFYING MAGENTA]

TO BUILD, TO CREATE. REASONS ARE NOT WINDOWS [THEY ARE WALLS, OBSTACLES]

There are those who build with the solid, matter that stains wide-open eyes, lacking grain and consistency. There are those who create, make light, become light, focusing on a small pink light – a glimmer of hope that fades among the clouds. There are those who, with a few old tools, use reason, not ration, their portion of the universe. Yet, they remain behind glasses that force them to look without truly peering out, without seeing what really is. Without perceiving the countless parts at play. Perhaps it's fine this way, in their own individuality, in that space where they manage to understand, even if only a little. They will never fly like an eagle.

2024 | Digital Art | 7650x5100 px | Limited Edition



TO BUILD, TO CREATE. REASONS ARE NOT WINDOWS [THEY ARE WALLS, OBSTACLES]



TO BUILD, TO CREATE. REASONS ARE NOT WINDOWS [THEY ARE WALLS, OBSTACLES]



TO BUILD, TO CREATE. REASONS ARE NOT WINDOWS [THEY ARE WALLS, OBSTACLES]

ANGER, MOURNING. IN BLUE [HUMAN HINDRANCES]

In the world, many people suffer. Emotions, moods, and sensations intertwine in corners of refuge, where there is no attack, but an inner defense. The world is vast, conflicts are numerous, and the true quality of being human is not to let go. When will we be able to do that?

2024 | Digital Art | 7650x5100 px | Limited Edition



ANGER, MOURNING. IN BLUE [HUMAN HINDRANCES]



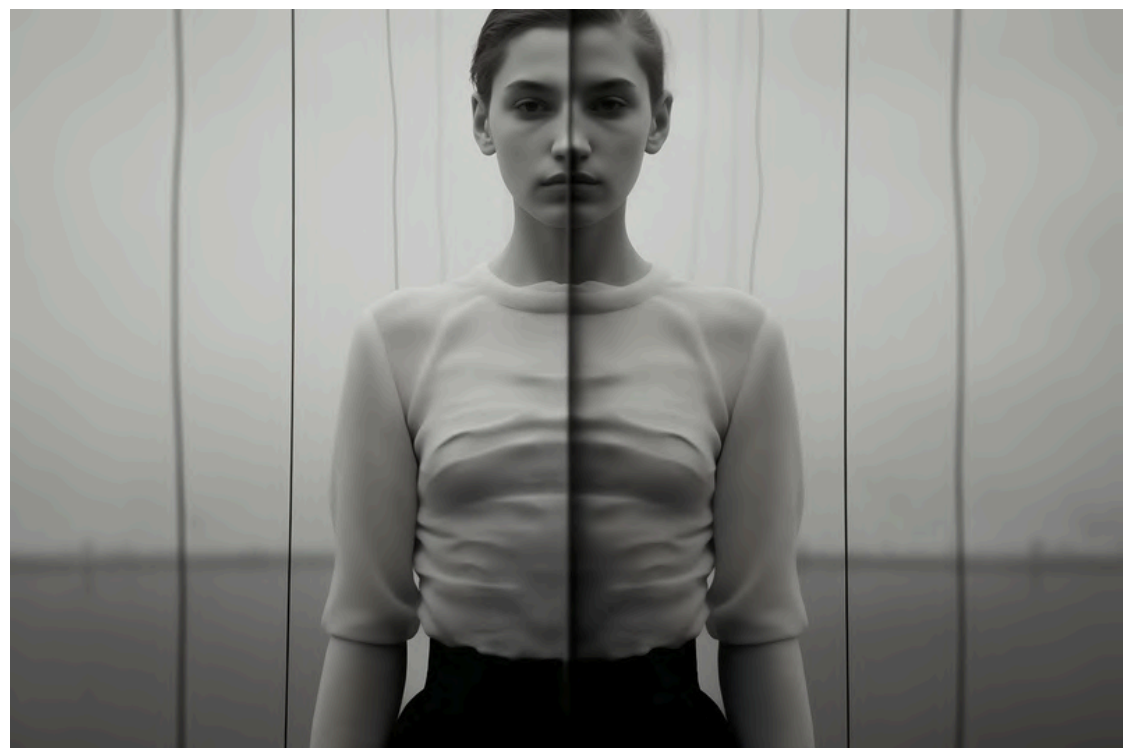
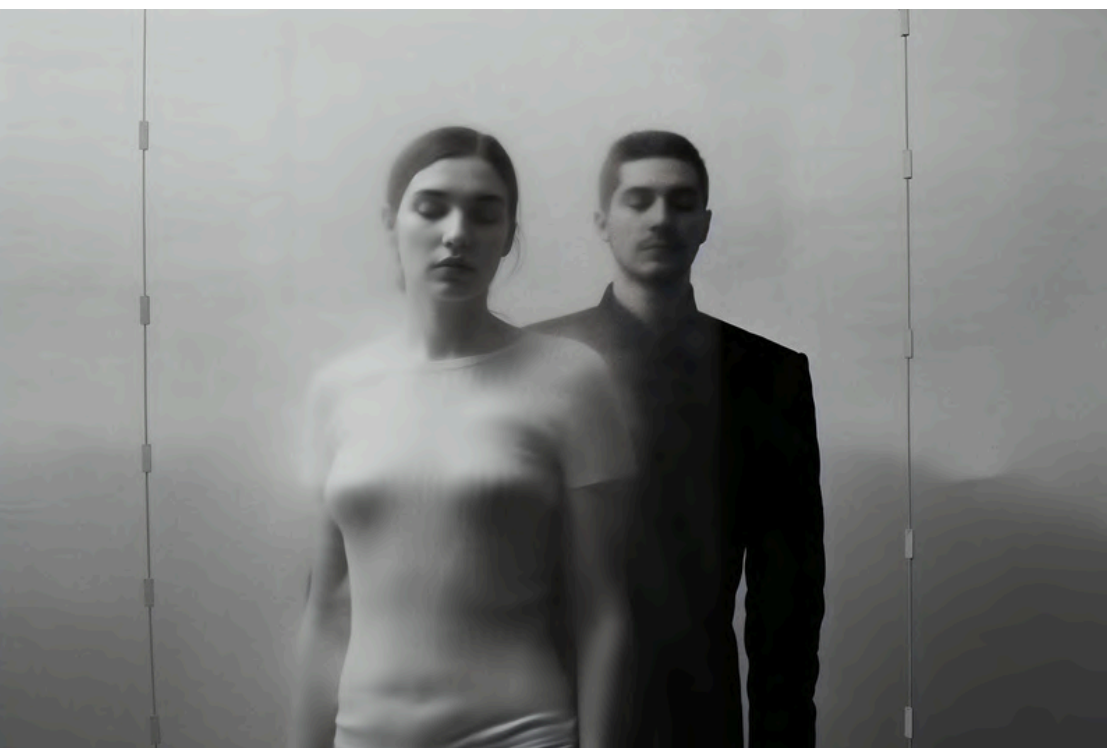
ANGER, MOURNING. IN BLUE [HUMAN HINDRANCES]



ANGER, MOURNING. IN BLUE [HUMAN HINDRANCES]



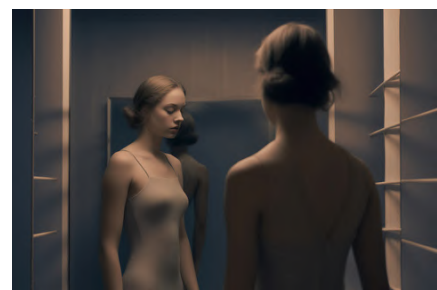
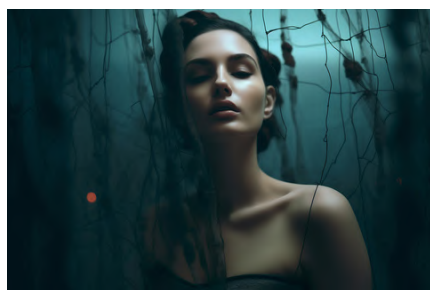
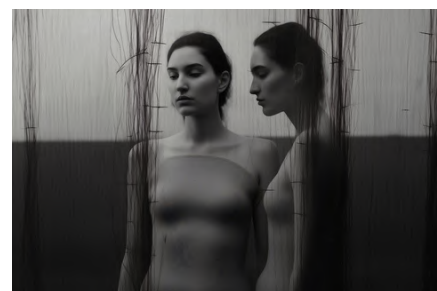
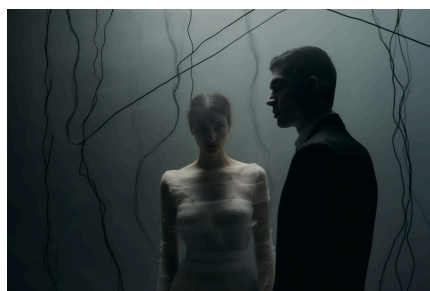
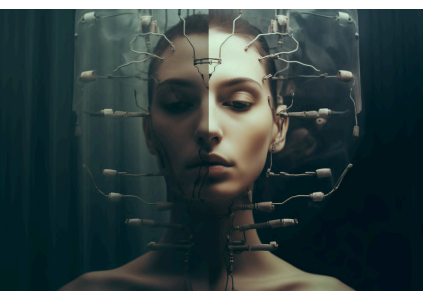
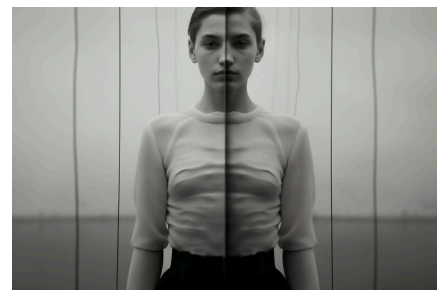
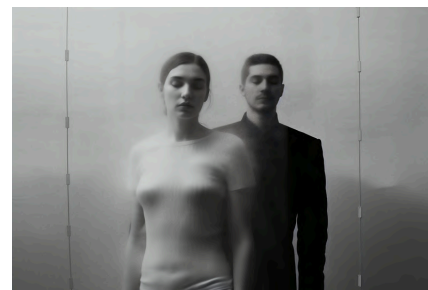
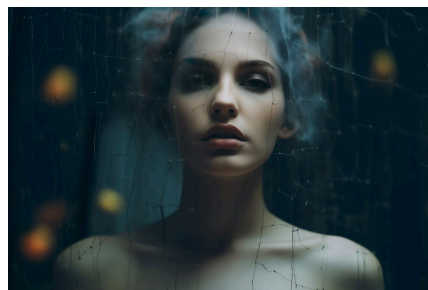
ANGER, MOURNING. IN BLUE [HUMAN HINDRANCES]



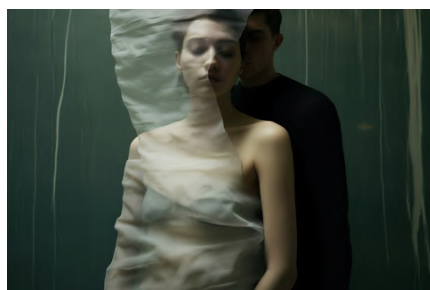
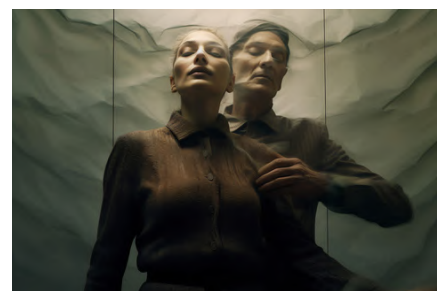
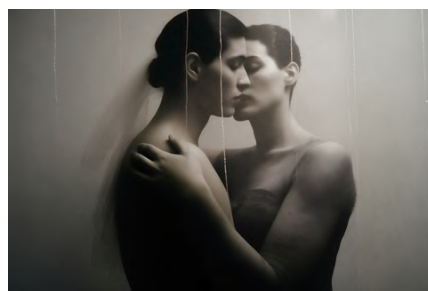
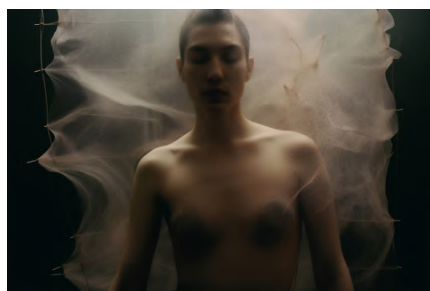
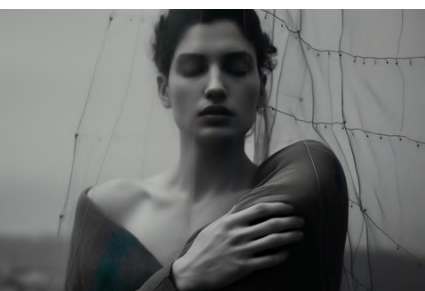
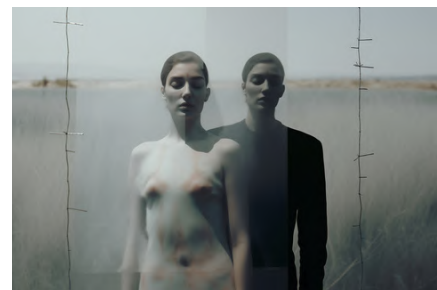
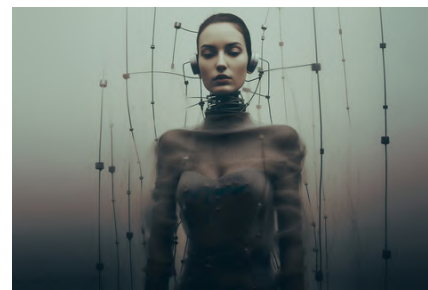
ANGER, MOURNING. IN BLUE [HUMAN HINDRANCES]



ANGER, MOURNING. IN BLUE [HUMAN HINDRANCES]



ANGER, MOURNING. IN BLUE [HUMAN HINDRANCES]

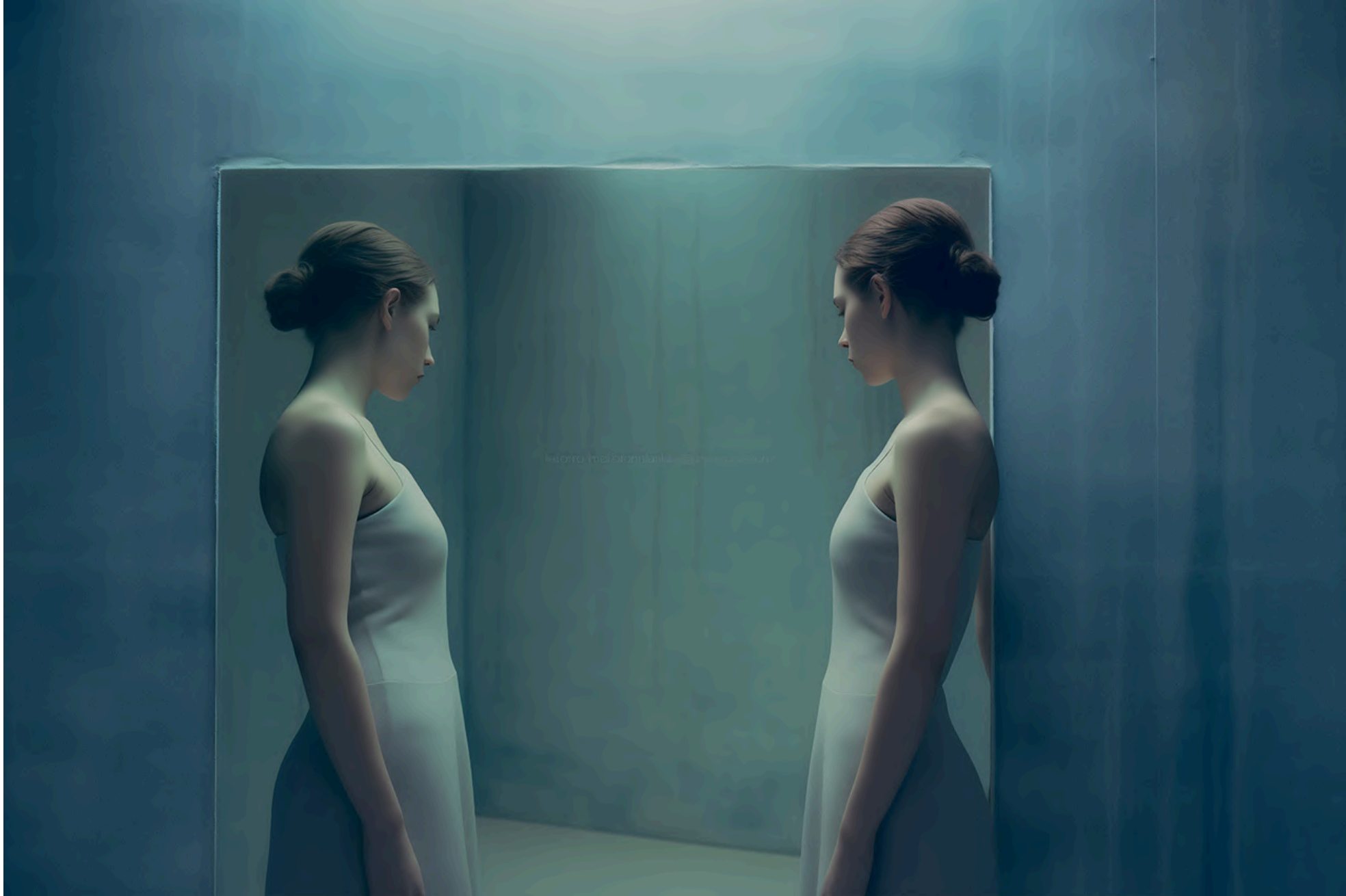


ANGER, MOURNING. IN BLUE [HUMAN HINDRANCES]

SENSE IN BLUE [INVITATION]

I am immersed in this color-non-color, where night and darkness find their space. Here, one feels the freedom to explore the most remote corners and face inner challenges. In blue, time stops and rejoices; hands meet, gazes get lost, reflecting a soul that expands into airy spaces. A thank you lives in a small yet immense point, a profound and heartfelt spirit.

2024 | Digital Art | 7650x5100 px | Limited Edition



SENSE IN BLUE [INVITATION]

THAT OF REBELLING, FOR A STRONG REASON. EMERGENCE PROJECT

Women prepare, perhaps together with humanity. To rebel means to exist fully, authentically, after deeply exploring history and oneself. The woman, a driving and maternal force, now desires to be the protagonist of a wiser world. After fire, she knows well the art of creation. To rebel is to push forward a thirst for revenge, primarily interior, that leads both the individual and the entire human race to rediscover and recognize themselves for who they are. To transcend limits, distilling the essence of being human to regain well-being. To return to the radiant path, taking the destiny of the world and civilization into one's hands.

The woman, like a deity, waits to be heard. After silence, words and light arrive. The Woman builds paths like rays: different journeys that open and conquer space, spaces of freedom. This is what they feel. They, the two women portrayed, prepare for this change. It will be a discovery for all.

2024 | Digital Art | 7650x5100 px | Limited Edition



THAT OF REBELLING, FOR A STRONG REASON. EMERGENCE PROJECT

PETROLEUM. THE COMPROMISED DIMENSION [OF THE RITE, OF THE SYMBOL, OF THE SACRED]

A sense of suspension pervades the air, revealing the precariousness of our existence. Although useful, the system can limit us, making us unaware of our intrinsic power. Supreme secrets reveal ambivalent truths: like oil, which temporarily heals but can also conceal. It is essential to free oneself from this viscous substance that glues and hinders deep insight. The root from which to start must be excavated to resurface, like an anchor that holds.

2024 | Digital Art | 7650x5100 px | Limited Edition



PETROLEUM. THE COMPROMISED DIMENSION [OF THE RITE, OF THE SYMBOL, OF THE SACRED]



PETROLEUM. THE COMPROMISED DIMENSION [OF THE RITE, OF THE SYMBOL, OF THE SACRED]



PETROLEUM. THE COMPROMISED DIMENSION [OF THE RITE, OF THE SYMBOL, OF THE SACRED]



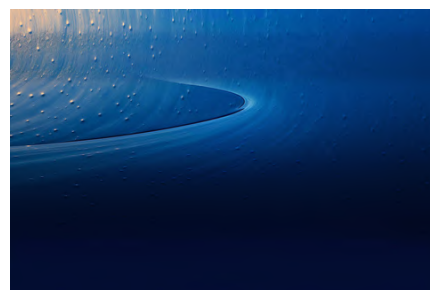
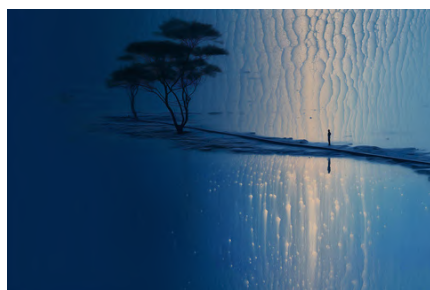
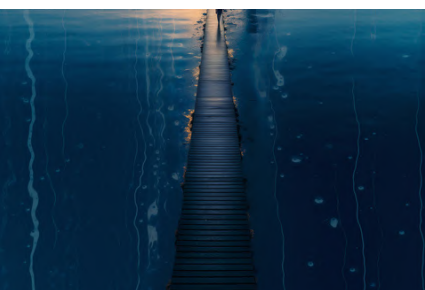
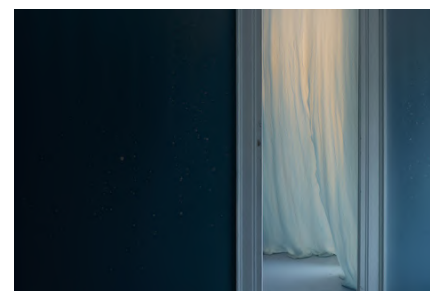
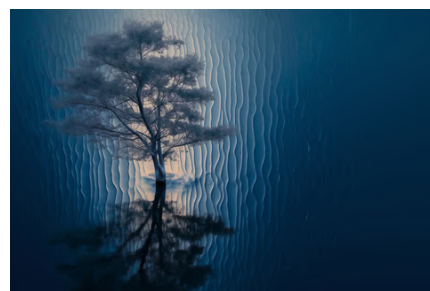
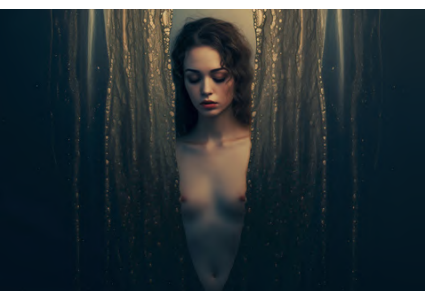
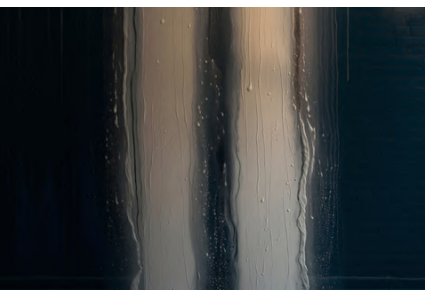
PETROLEUM. THE COMPROMISED DIMENSION [OF THE RITE, OF THE SYMBOL, OF THE SACRED]



PETROLEUM. THE COMPROMISED DIMENSION [OF THE RITE, OF THE SYMBOL, OF THE SACRED]



PETROLEUM. THE COMPROMISED DIMENSION [OF THE RITE, OF THE SYMBOL, OF THE SACRED]



PETROLEUM. THE COMPROMISED DIMENSION [OF THE RITE, OF THE SYMBOL, OF THE SACRED]

SENSE IN BLUE [INTIMACY]

I am immersed in this color-non-color, where night and darkness find their space. Here, one feels the freedom to explore the most remote corners and face inner challenges. In blue, time stops and rejoices; hands meet, gazes get lost, reflecting a soul that expands into airy spaces. A thank you lives in a small yet immense point, a profound and heartfelt spirit.

2024 | Digital Art | 7650x5100 px | Limited Edition



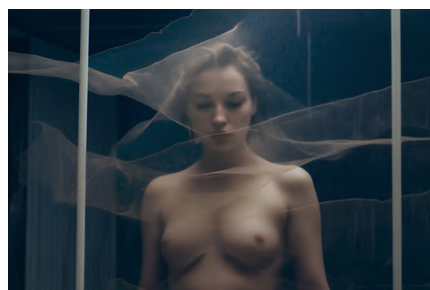
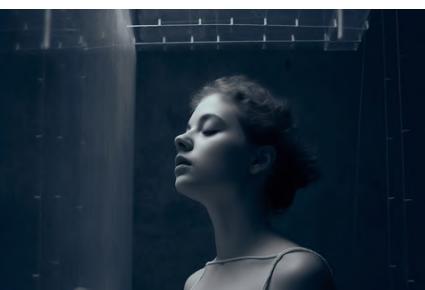
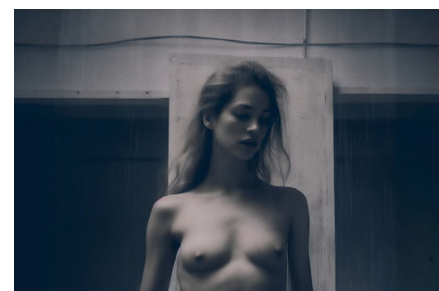
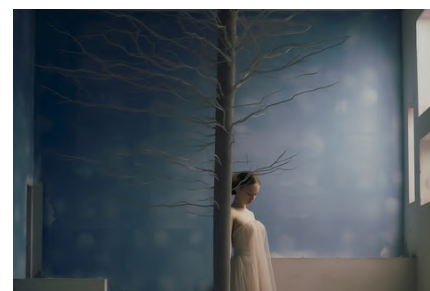
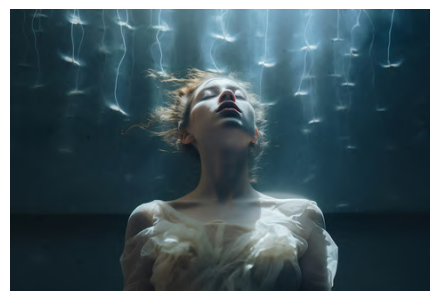
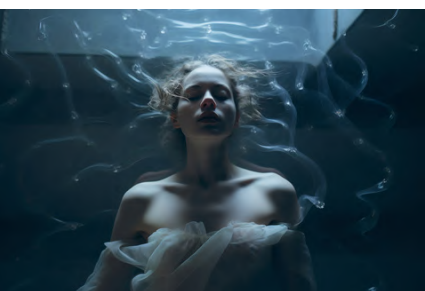
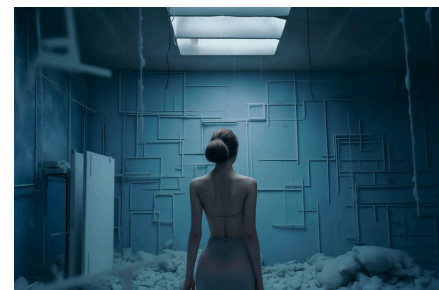
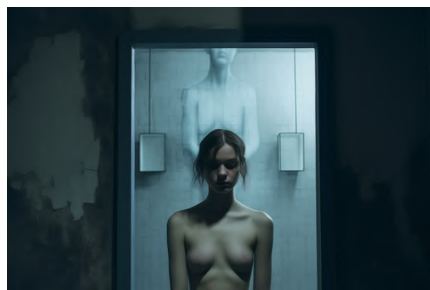
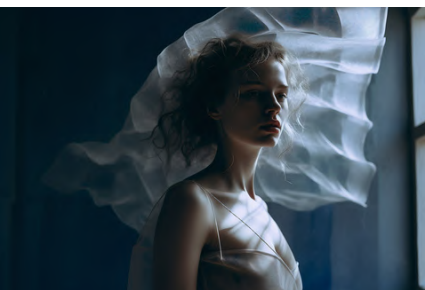
SENSE IN BLUE [INTIMACY]



SENSE IN BLUE [INTIMACY]



SENSE IN BLUE [INTIMACY]



SENSE IN BLUE [INTIMACY]

SENSE IN BLUE [COURAGE]

I am immersed in this color-non-color, where night and darkness find their space. Here, one feels the freedom to explore the most remote corners and face inner challenges. In blue, time stops and rejoices; hands meet, gazes get lost, reflecting a soul that expands into airy spaces. A thank you lives in a small yet immense point, a profound and heartfelt spirit.

2024 | Digital Art | 7650x5100 px | Limited Edition



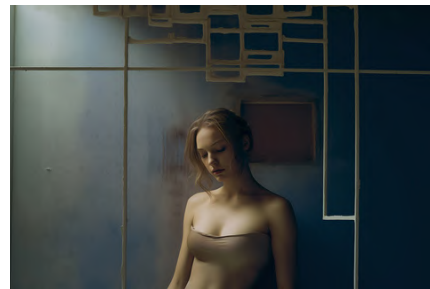
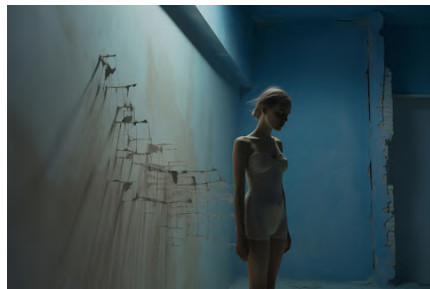
SENSE IN BLUE [COURAGE]



SENSE IN BLUE [COURAGE]



SENSE IN BLUE [COURAGE]



SENSE IN BLUE [COURAGE]

STRANGE FACES [EXPLODE, DRIP]

These are faces moving from within, expressions of experiences lived in the world. Suspended, they explore and explode, representing who we are. Like a mirror reflecting a kiss or a body dripping unknown matter, these intimate dynamics move with the lightness of a cat, celebrated in their uniqueness.

2024 | Digital Art | 7650x5100 px | Limited Edition



STRANGE FACES [EXPLODE, DRIP]



STRANGE FACES [EXPLODE, DRIP]



STRANGE FACES [EXPLODE, DRIP]



STRANGE FACES [EXPLODE, DRIP]

LANDSCAPES OF THE SOUL [EMERGE]

Temperatures, substances, and desires take shape in the spaces around us. We immerse ourselves in this dense and radiant matter, trying to grasp it and nourish ourselves with it to transform it into flavors and meanings. The light that reverberates invites reflection on the duality between what we seek and what we possess, recognizing the vitality that pervades life.

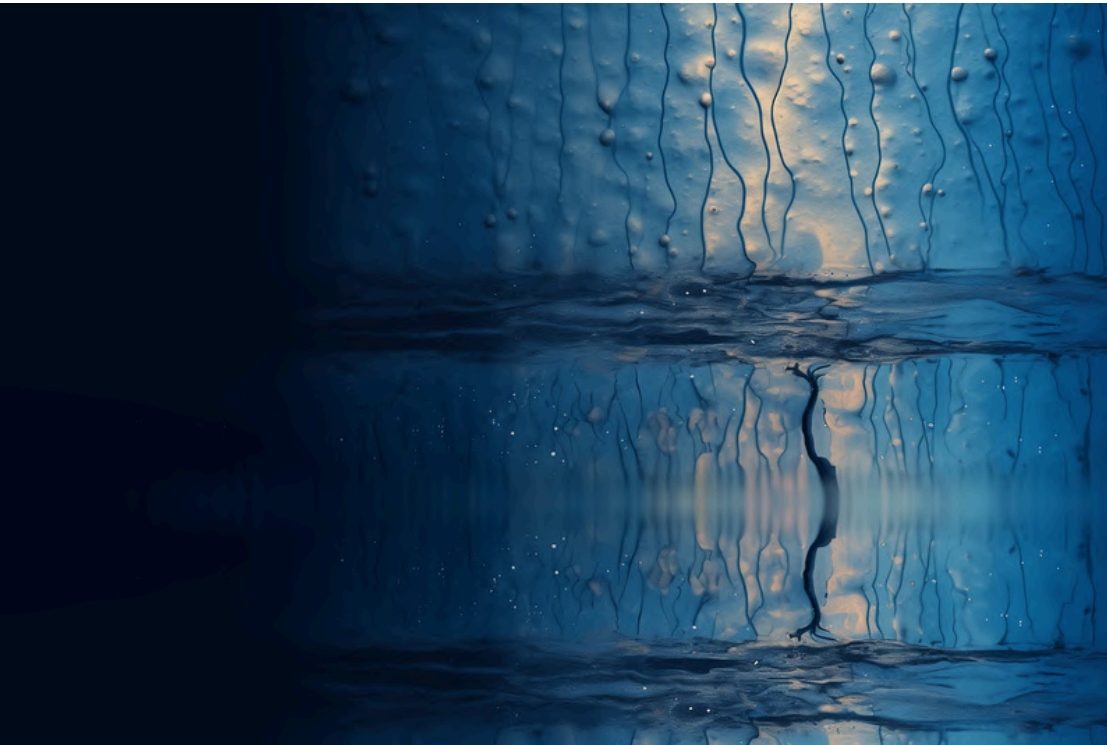
2024 | Digital Art | 7650x5100 px | Limited Edition



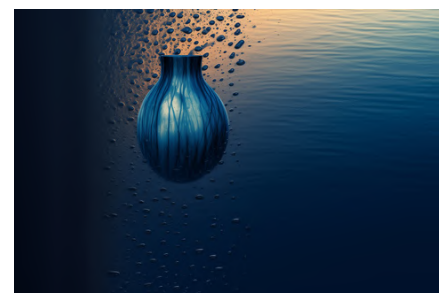
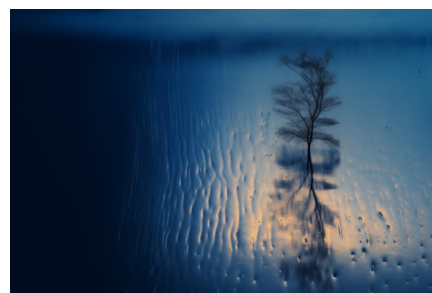
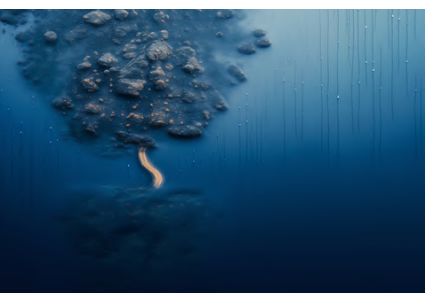
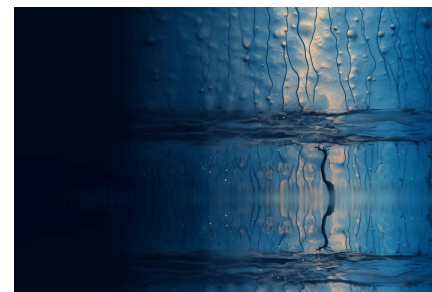
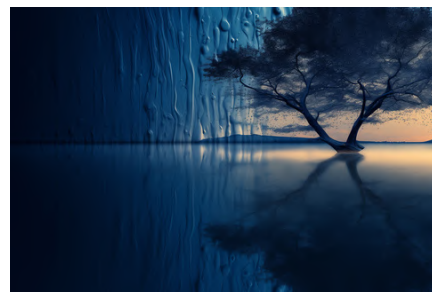
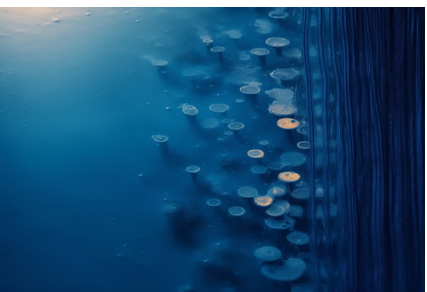
LANDSCAPES OF THE SOUL [EMERGE]



LANDSCAPES OF THE SOUL [EMERGE]



LANDSCAPES OF THE SOUL [EMERGE]



LANDSCAPES OF THE SOUL [EMERGE]

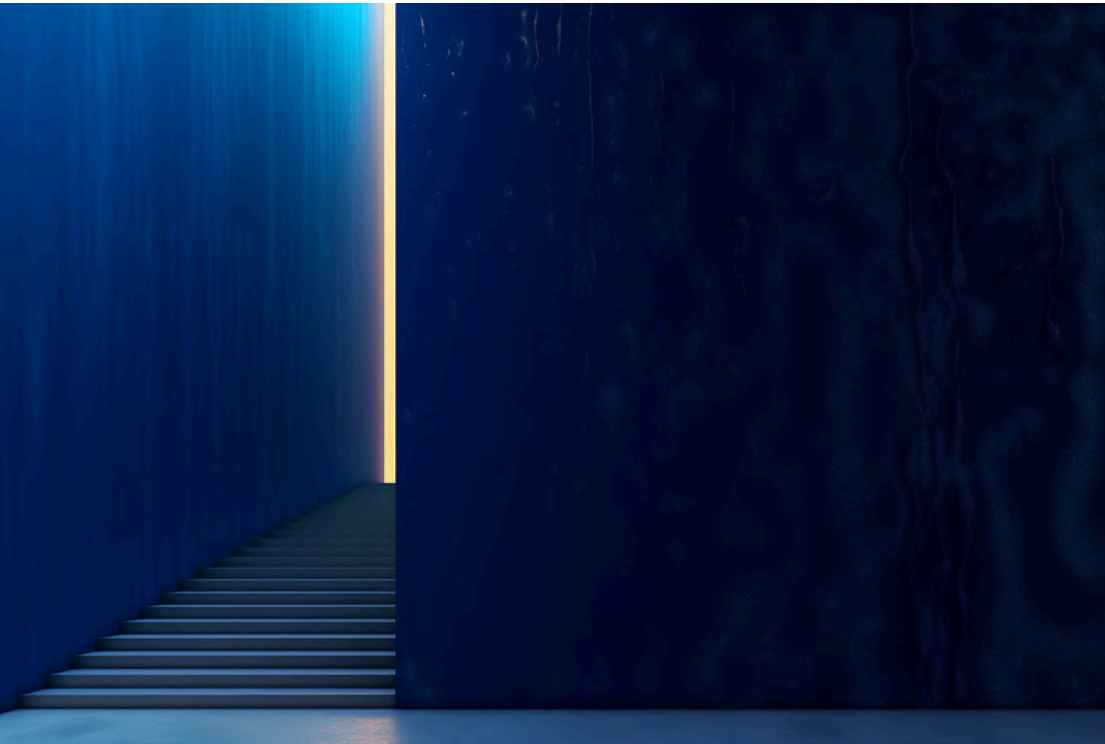
IN THE LIGHT BLUE THE NUANCES, OR THOUGHT FOR MIRTH [ASPIRE TO TIME]

The alternation of landscapes and sensations is enriched by the freshness of the air. There are tight details and broad vistas that open up. This particular sky blue resonates within the soul, offering variations that dance between moods and perspectives. It is the joy of living, the perception of possibilities materializing around us. When we open our eyes, we may discover that all this is already here, with us.

2024 | Digital Art | 7650x5100 px | Limited Edition



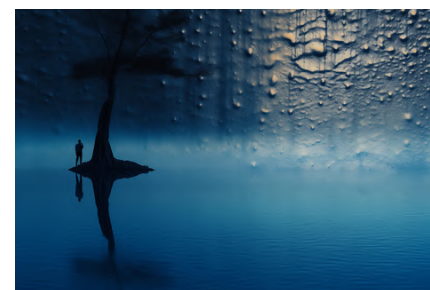
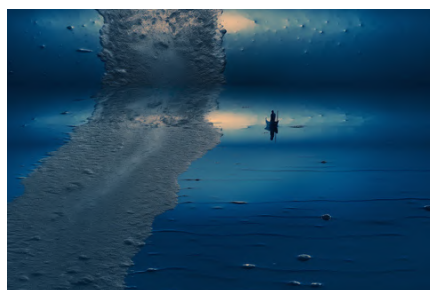
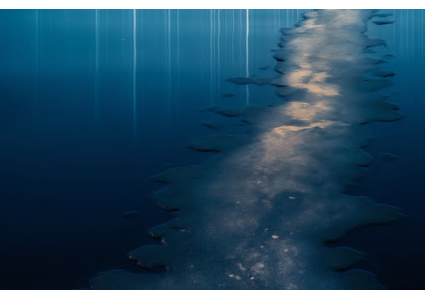
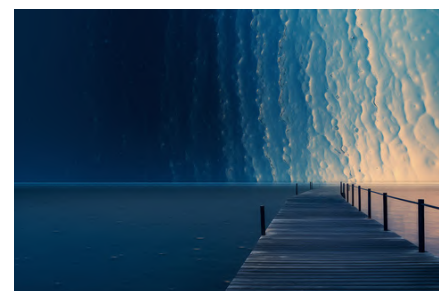
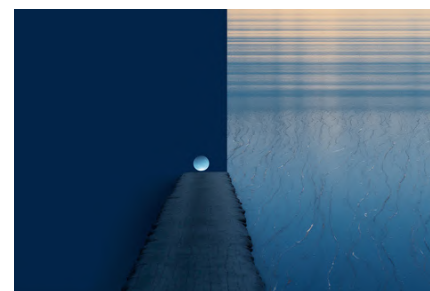
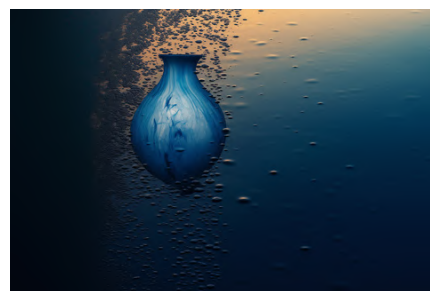
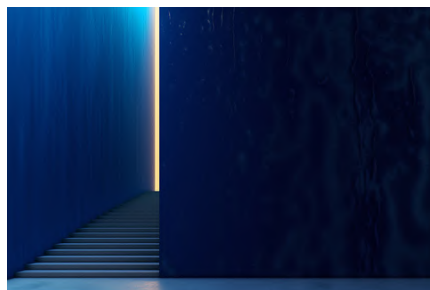
IN THE LIGHT BLUE THE NUANCES, OR THOUGHT FOR MIRTH [ASPIRE TO TIME]



IN THE LIGHT BLUE THE NUANCES, OR THOUGHT FOR MIRTH [ASPIRE TO TIME]



IN THE LIGHT BLUE THE NUANCES, OR THOUGHT FOR MIRTH [ASPIRE TO TIME]



IN THE LIGHT BLUE THE NUANCES, OR THOUGHT FOR MIRTH [ASPIRE TO TIME]

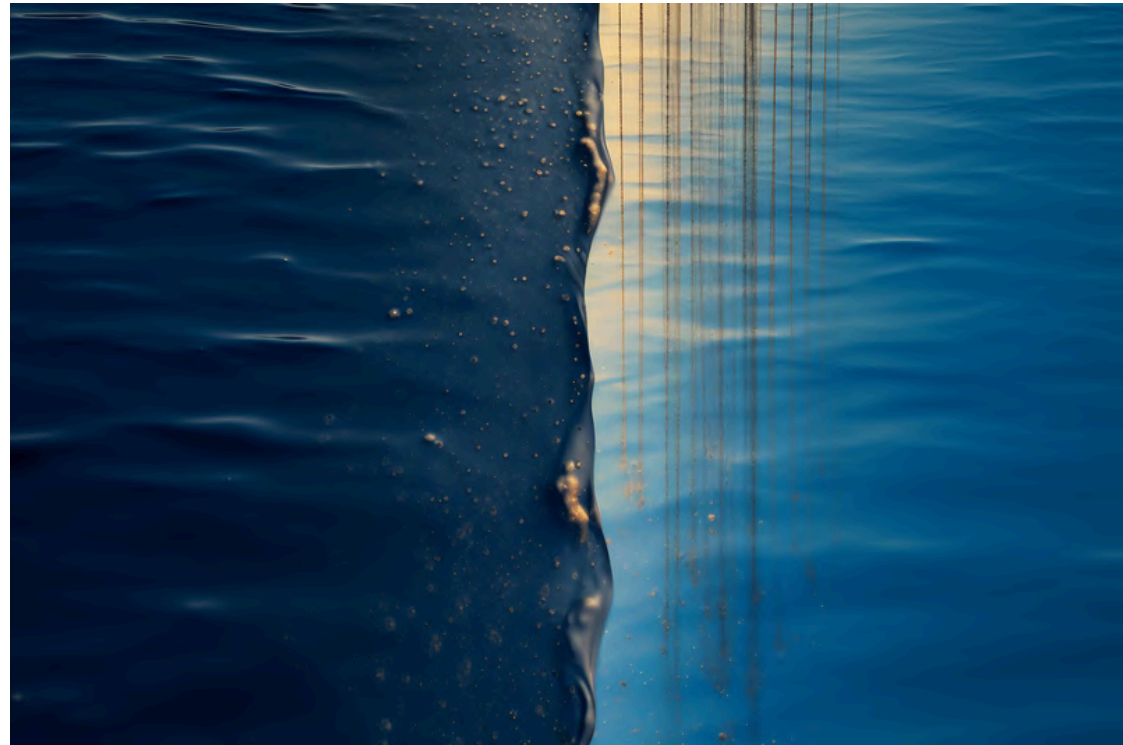
IN THE LIGHT BLUE THE NUANCES, OR THOUGHT FOR MIRTH [TO REALIZE TIME]

The alternation of landscapes and sensations is enriched by the freshness of the air. There are tight details and broad vistas that open up. This particular sky blue resonates within the soul, offering variations that dance between moods and perspectives. It is the joy of living, the perception of possibilities materializing around us. When we open our eyes, we may discover that all this is already here, with us.

2024 | Digital Art | 7650x5100 px | Limited Edition



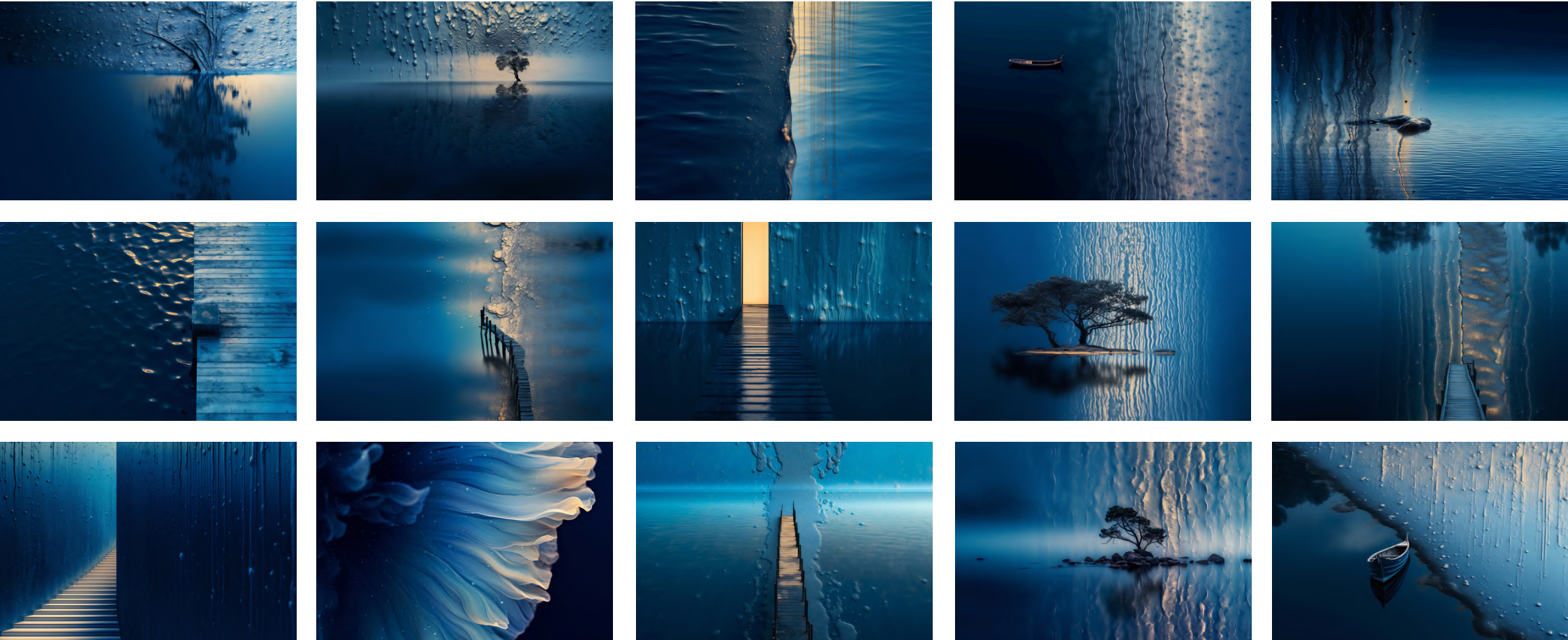
IN THE LIGHT BLUE THE NUANCES, OR THOUGHT FOR MIRTH [TO REALIZE TIME]



IN THE LIGHT BLUE THE NUANCES, OR THOUGHT FOR MIRTH [TO REALIZE TIME]



IN THE LIGHT BLUE THE NUANCES, OR THOUGHT FOR MIRTH [TO REALIZE TIME]



IN THE LIGHT BLUE THE NUANCES, OR THOUGHT FOR MIRTH [TO REALIZE TIME]



IN THE LIGHT BLUE THE NUANCES, OR THOUGHT FOR MIRTH [TO REALIZE TIME]

I CREATED | CREATIVE WORK

I have created with my hands immersed in color, feeling the weight and density of the material. I expand beyond the known, traversing shades of yellow and blue, while my soul opens to new dimensions, free from boundaries.

2023 | Digital Art | 7650x5100 px | Limited Edition



I CREATED | CREATIVE WORK

I CREATED | POWER

I have created a reflection on the connection between heart and mind, an enigmatic organism to which I whisper prayers. It is part of me and, at the same time, a constant call to remain aware of the delicacy of this bond.

2023 | Digital Art | 7650x5100 px | Limited Edition



| CREATED | POWER

I CREATED | RED HAIR

I have created to celebrate the exception that lives in difference, an act of anarchy that shines in open and vigilant eyes. There is a story to tell and actions to take, a tribute to individuality that asserts itself uncompromisingly.

2023 | Digital Art | 7650x5100 px | Limited Edition



I CREATED | RED HAIR

I CREATED | SOMETHING THAT RESEMBLES MUD, FROST, AND SILENCE

I have created an inner music, rational and bizarre, that vibrates deeply. A subtle restlessness is felt, while a rigid presence expands and delineates, a mass that invades yet remains on the border between control and chaos.

2023 | Digital Art | 7650x5100 px | Limited Edition



I CREATED | SOMETHING THAT RESEMBLES MUD, FROST, AND SILENCE

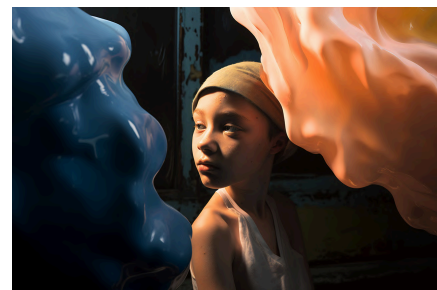
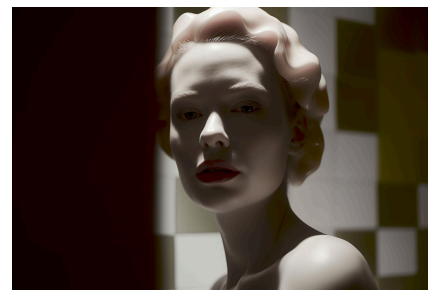
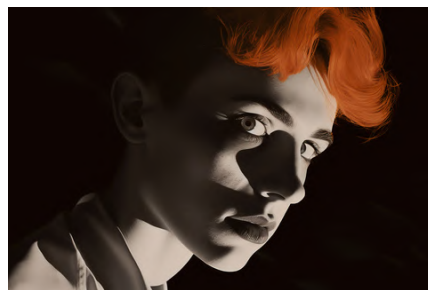
I CREATED | ADORABLE

I have created in a world of intertwining and subtle connections, looking upward not to challenge, but to respect. It is a tribute to uniqueness and a story that deserves to be cherished and firmly reiterated with strength and delicacy.

2023 | Digital Art | 7650x5100 px | Limited Edition



| CREATED | ADORABLE



| CREATED | COMPLETE SERIES

LIGHT THAT EXECUTES. WITH WARMTH AND ART

Being in what one is and what one does. The work moves between mental and physical places, revealing the soul. The light is a guide and contemplation, an inner mirror that reflects the surrounding environment. Amidst the crowd or in front of a screen, the light is the flame that accompanies me, oscillating between restlessness and certainty.

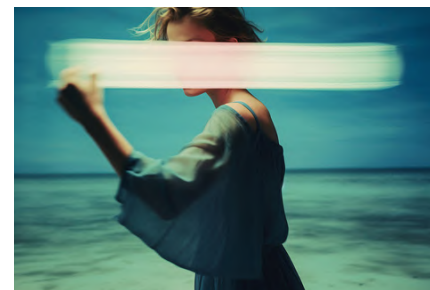
2023 | Digital Art | 7650x5100 px | Limited Edition



LIGHT THAT EXECUTES. WITH WARMTH AND ART



LIGHT THAT EXECUTES. WITH WARMTH AND ART



LIGHT THAT EXECUTES. WITH WARMTH AND ART

ABOUT ME

My artistic research thrives on an unceasing dialogue between image, thought, and emotion, aiming to explore the many nuances of human experience. In recent years, the introduction of Generative Art and AI Art has enriched my practice, allowing me to expand the boundaries of visual language and translate into images what is often difficult to express in words. Through these technologies, I unveil complex inner worlds, weaving together fragility and strength, silence and color.

My works address themes deeply rooted in contemporary life, while also opening up to universal reflections. In projects such as "Strange Faces", I explore identity and its multifaceted nature, creating faces that transform into vibrant energy. Each image merges emotions and forms, a play of tensions and colors that invites the viewer to ponder what lies beneath the surface.

In "Sense in Blue", darkness and color become metaphors for introspection and mystery. Here, time is suspended, leaving room for a profound connection with being. Joy and silence intertwine, creating a meditative experience that transcends visual representation.

More complex themes emerge in works such as "Anger, Mourning. In Blue", where I explore pain and human resilience within a fragmented context. Emotions layer themselves, revealing the capacity to endure and find meaning even amidst adversity. In "Petroleum. The Compromised Dimension", I address the tension between individual vulnerability and systemic forces, reflecting on power dynamics and the contradictions of modernity. Here, the precariousness of existence becomes a meditation on the interconnectedness between individuals and their surrounding environments.

Through projects such as "Landscapes of the Soul", I aim to offer a space where desire and dream converge, revealing beauty that is both external and internal. Each work becomes an invitation to delve not only into the complexity of life but also into the possibility of finding harmony within the world around us.

My art seeks to create a sensitive dialogue with the observer, a shared space where light and shadow meet, giving rise to an interplay of emotions and interpretations. It is within this collective narrative that my research is rooted—a journey toward the discovery of meanings that can broaden our perspective, offering new insights to better understand the world and ourselves.

FORMATIVE EXPERIENCES

PROFESSIONAL PROFILE

Multidisciplinary artist and designer, my artistic journey explores the intersection of art and society, using creativity as a tool for reflection and emotional emancipation. Through my work, I investigate the human condition, enhancing the dialogue between meaning and form. My work spans generative art, photography, and graphic design, with a commitment to producing pieces that reflect a deep understanding of social dynamics.

EDUCATION

- Academy of Fine Arts in Catania – Set Design Course.
- University of Bologna (DAMS) – Degree in Theatre and Cinema.
- Teatro della Limonaia, Sesto Fiorentino – Four-year Acting Course and two-year Set Design Course.

ARTISTIC JOURNEY

Generative Art and AI Art

- Creation of generative art and AI art works.

PHOTOGRAPHY

- Personal and reportage photography projects on fotografianuda.it.

VISUAL AND POETIC EXPRESSION

- Personal artistic projects on alicenellanima.it.
- Poetic writing and publication of collections on njoaar-poeticdiary.it.

GRAPHIC DESIGN AND ILLUSTRATION

- Freelance – Graphic design, branding, and artistic consulting projects with Simplicity Design, Stellet Licht Design, and Soel.
- Graphic design projects for Leaf - Ideas for communication.
- Illustration for children's books, including the "Pulcina" series and the fairy tale "Hansel and Gretel".

DIRECTING AND SET DESIGN PROJECTS

- RecStudio27, Bologna – Concept designer and assistant director for short film creation with director Stefano Piciché.
- Teatro Le Laudi, Florence – Set designer for productions directed by Francesco Tei.

ORIANA EMMA

oriana.emma.art@gmail.com

+39 331 2522661 (mobile\WA)

www.orianaemma.it

IG [@orianaemma](#)